



Unknown (Egyptian)
Ibis, 26th Dynasty (664–525 BC)
bronze
6 7/8 x 8 11/16 in. (17.5 x 22 cm)
Gift of Sir Henry Rawlinson through Dwight W. Marsh, Class of 1842, by exchange
41.5.7

Sources

"Ancient Egyptian Gods and Goddess: Thoth: god of writing and knowledge (Ibis, Baboon)." Los Angeles County Museum of Art.
<http://collectionsonline.lacma.org/mwebcgi/mweb.exe?request=epage;id=501292;type=803>

Wilkinson, Richard H. *The Complete Gods and Goddesses of Ancient Egypt*. Thames & Hudson, 2003.

BACKGROUND INFORMATION

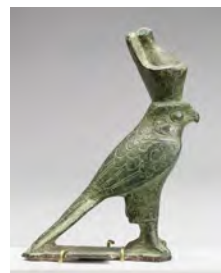
Ibis

26th Dynasty (664–525 B.C.)

Ibises are long-legged wading birds with long, downward-curving bills, which are used to probe the mud for food. Ibises were venerated as sacred animals in ancient Egypt. The ibis was associated with the lunar god Thoth, who was believed to have invented the art of writing, thus making him the patron saint of scribes.

Ibises were sold to pilgrims as votive offerings to Thoth and were mummified when they died. Thousands of mummified ibises were excavated at Saqqara, which indicates the popularity of Thoth.

RELATED IMAGES



Horus
no date
bronze; 4 x 2 15/16 in. (10.2 x 7.5 cm).
Gift of Horace Mayer (60.36.4)



Head of a Cat
26th Dynasty (664–525 B.C.)
bronze; 3 1/4 x 1 7/8 x 2 1/2 in. (8.2 x 4.7 x 6.3 cm). Gift of Sir Henry Rawlinson through Dwight W. Marsh, Class of 1842, by exchange (41.5.8)



Unknown (Egyptian)
Ibis, 26th Dynasty (664–525 BC)
bronze
6 7/8 x 8 11/16 in. (17.5 x 22 cm)
Gift of Sir Henry Rawlinson through Dwight W. Marsh, Class of
1842, by exchange
41.5.7

DISCUSS

Ibis
26th Dynasty (664–525 B.C.)

Test your observation skills! Work with a partner who cannot see the photograph of the Ibis. Describe this artifact to your partner with as much detail as you can, so that your partner can create a drawing based on your description. When the drawing is complete, compare it with the photograph on the webpage.

Read the background information on the Ibis. Where do you think the Ibis could have been found? In a tomb? If so, whose tomb? Why? What else might have been found there?



Unknown (Egyptian)
Ibis, 26th Dynasty (664–525 BC)
bronze
6 7/8 x 8 11/16 in. (17.5 x 22 cm)
Gift of Sir Henry Rawlinson through Dwight W. Marsh, Class of
1842, by exchange
41.5.7

CREATE

Ibis

26th Dynasty (664–525 B.C.)

Imagine that you are the archaeologist who discovered the tomb containing this Ibis.

Write a story describing:

- how you discovered the tomb
- what you found there
- what you heard, smelled, and felt
- the identity of the person buried in the tomb
- how you discovered his or her identity