



Unknown (Rajasthan)
A Lady with a Black Buck, 18th century
opaque watercolor on paper, heightened with gold
8 1/2 x 6 1/4 in.
Bequest of Mrs. Horace W. Frost
91.15.53

BACKGROUND INFORMATION

Unknown (Rajasthan)
A Lady with a Black Buck, 18th century

Idealized portraits of women were common within the Rajput kingdoms, in what is today northwestern India. Many Hindu devotional texts describe women's beauty, which symbolized the divine. Women are often portrayed as romantic heroines yearning to be united with their lovers. The subject matter for this watercolor is possibly derived from an Indian musical composition that tells the story of a lady walking in a forest. A deer follows closely, beguiled by her lovely music.



Unknown (Rajasthan)
A Lady with a Black Buck, 18th century
opaque watercolor on paper, heightened with gold
8 1/2 x 6 1/4 in.
Bequest of Mrs. Horace W. Frost
91.15.53

DISCUSS

Unknown (Rajasthan)
A Lady with a Black Buck, 18th century

Idealized portraits of women, like this one celebrating female beauty, were common in the Rajput kingdoms, in what is today northwestern India. This painting may have been inspired by an Indian song that tells the story of a woman walking in a forest. Roll your cursor over the image and consider how this artist envisions female beauty:

- What do you see? What details do you notice?
- What types of lines do you see?
- Can you find particular types of lines that are repeated in different parts of the picture?
- What is the focal point of this painting (the area that draws your attention the most)?
- What draws your attention to that area?
- What kind of relationship does this woman seem to have with nature?
- What do you see that makes you say that?
- How would you describe this artist's view of women and beauty?
- What do you think the artist is saying?



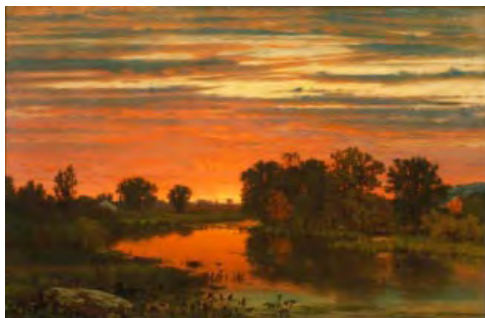
CREATE

Unknown (Rajasthan)
A Lady with a Black Buck, 18th century

This watercolor paints a picture of female beauty closely connected with nature. Compare this image with other artists' renditions of the relationship between humans and nature below.

After, create your own picture to show the kind of relationship you think that humans should have with nature.

Unknown (Rajasthan)
A Lady with a Black Buck, 18th century
opaque watercolor on paper, heightened with gold
8 1/2 x 6 1/4 in.
Bequest of Mrs. Horace W. Frost
91.15.53



George Inness (American, 1825–1894)
Twilight, ca. 1860
oil on canvas
36 x 54 1/4 in.
Gift of Cyrus P. Smith, Class of 1918, in
memory of his father, B. Herbert Smith, Class
of 1885
79.66



Maurice Brazil Prendergast (American,
1858–1924)
Summer Day, Salem, ca. 1915–1918
oil on canvas
18 x 28 1/4 in.
Gift of Mrs. Charles Prendergast
Catalogue Raisonne: CMO #436
86.18.80



Thomas Nast (American, 1840–1902)
*Let Us Have A Clean Sweep All Around New
York*, August 20, 1881
print on paper
15 13/16 x 10 13/16 in.
Gift of Irwin and Dianne Steinberg
99.1.26